

Remote Desktop& Employee Monitoring Setup



Installation Steps:

1. System Requirements Check
2. DeskGate Server Installation
3. Management Setup
4. Making Local Settings
5. Client Setup

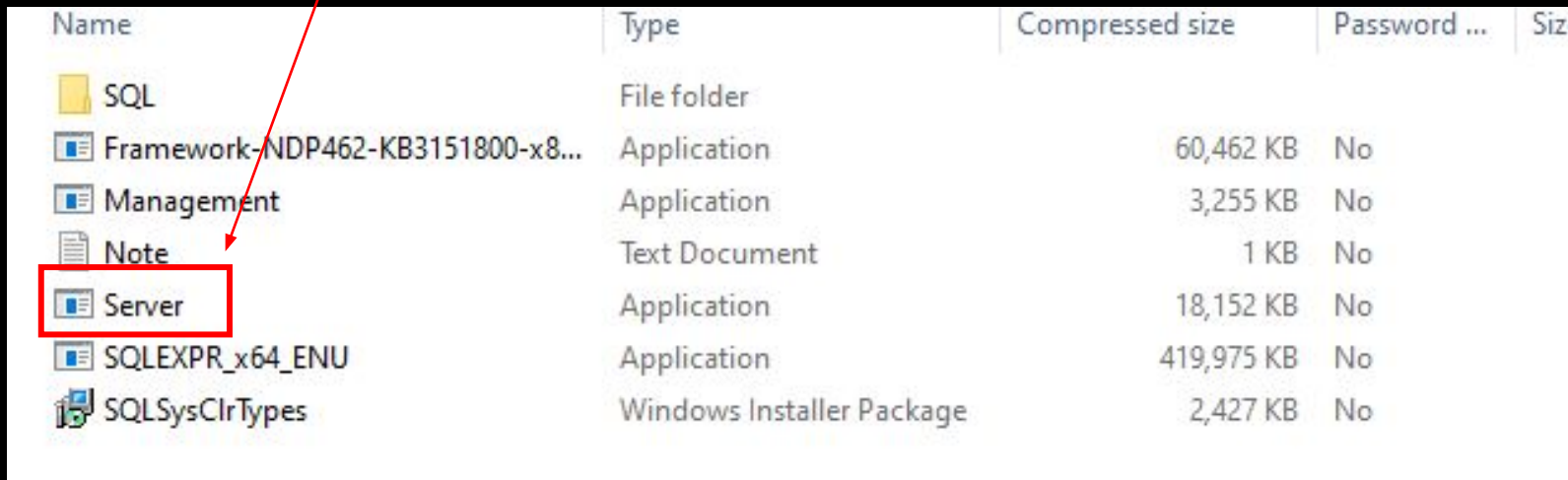
1. System Requirements

Computer to be Installed Server;

- ❑ It must have one of the operating systems Windows 8, Windows 10, Windows 11, Server 2012, Server 2016, Server 2019.
- ❑ At least 4 gb ram depending on the number of users
- ❑ CPU at **least** 4 cores
- ❑ HDD 250 or 500 Standard will be enough
- ❑ If the video recording feature will be used, it is necessary to allocate 150-250 mb of space per user per day.

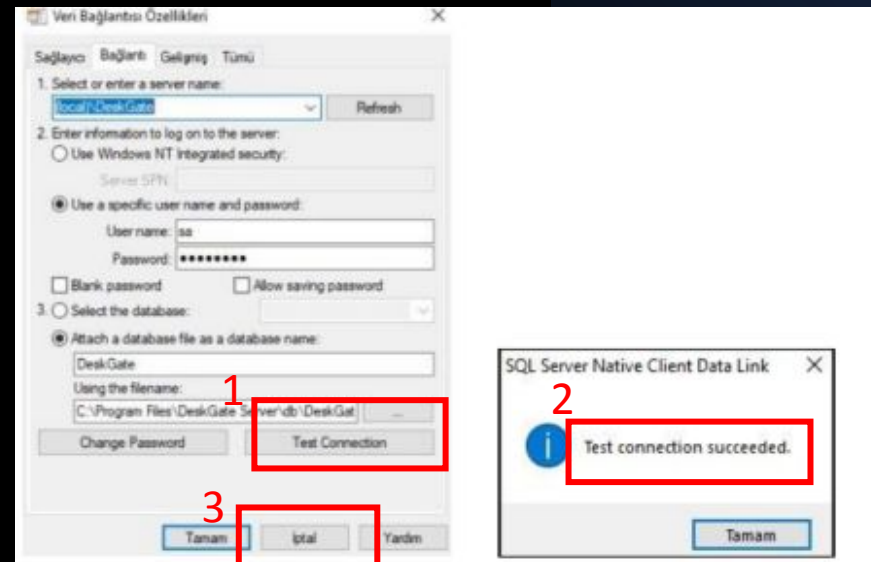
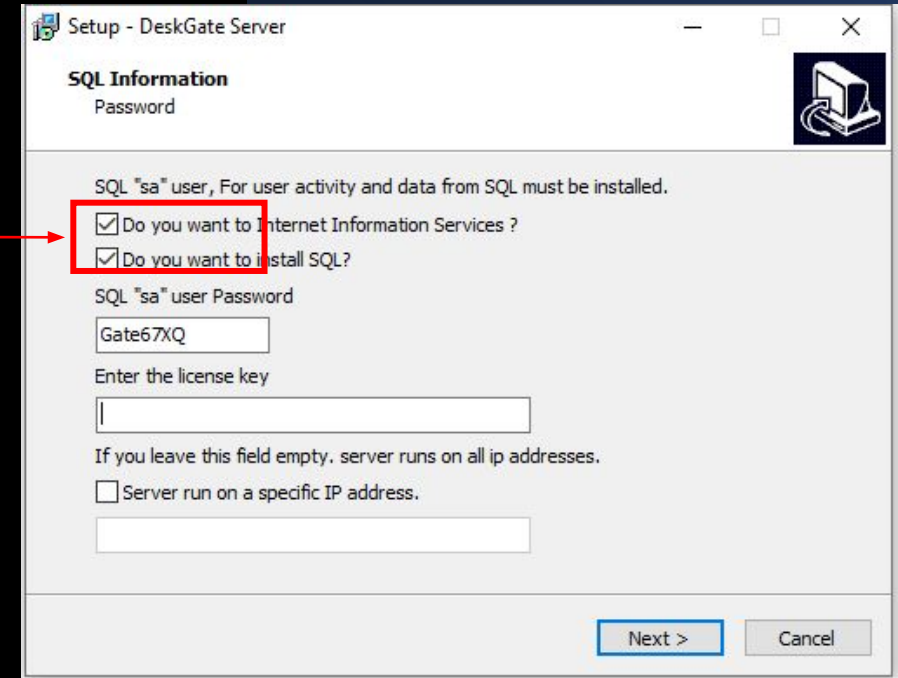
2. DeskGate Server kurulumu Version 4.16

1. Before installation, you should contact us and request a license key defined for your company. You can send us your license request from the link <https://deskgate.com/en/contact>
2. The installation file must be downloaded and extracted as a file https://file.deskgate.com/download/file/ITSupport_4.16_WithSQL.zip
3. The server must be run

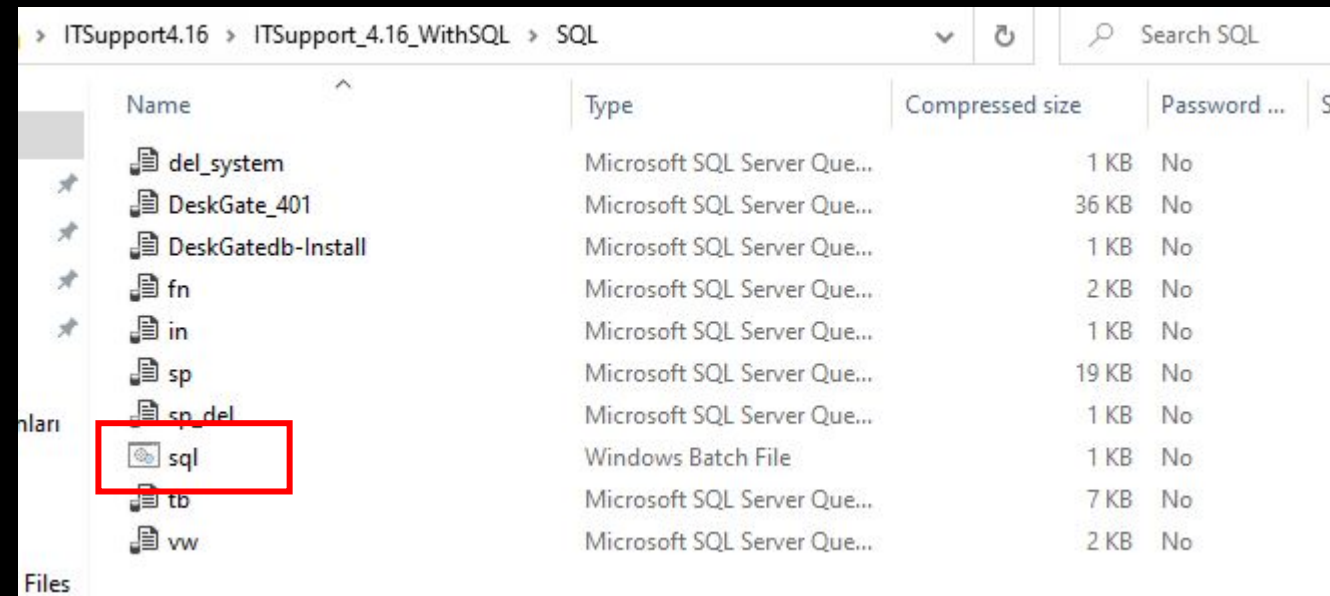


Name	Type	Compressed size	Password ...	Size
SQL	File folder			
Framework-NDP462-KB3151800-x8...	Application	60,462 KB	No	
Management	Application	3,255 KB	No	
Note	Text Document	1 KB	No	
Server	Application	18,152 KB	No	
SQLEXPR_x64_ENU	Application	419,975 KB	No	
SQLSysClrTypes	Windows Installer Package	2,427 KB	No	

- Ø SQL and IIS should be marked and the license key that came with the license mail should be entered and next should be selected. The SQL password should not be changed.
- Ø After the SQL and IIS installation is completed, in the Data Connection Properties window that opens, Test Connection should be clicked and Successful warning should be displayed.
- Ø Then this page should be closed with the Cancel option.



- After the installation is complete, the SQL folder in the setup file should be opened and the batch file, which is the sql Windows Batch File, should be run.



The screenshot shows a Windows File Explorer window with the address bar set to 'ITSupport4.16 > ITSupport_4.16_WithSQL > SQL'. The file list contains several files, with the 'sql' file highlighted by a red rectangle. The 'sql' file is a Windows Batch File, 1 KB in size, and has no password protection.

Name	Type	Compressed size	Password ...
del_system	Microsoft SQL Server Que...	1 KB	No
DeskGate_401	Microsoft SQL Server Que...	36 KB	No
DeskGatedb-Install	Microsoft SQL Server Que...	1 KB	No
fn	Microsoft SQL Server Que...	2 KB	No
in	Microsoft SQL Server Que...	1 KB	No
sp	Microsoft SQL Server Que...	19 KB	No
sp_del	Microsoft SQL Server Que...	1 KB	No
sql	Windows Batch File	1 KB	No
tb	Microsoft SQL Server Que...	7 KB	No
vw	Microsoft SQL Server Que...	2 KB	No

3. Management Setup

1. The Management in the setup file should be run. It will appear on the desktop after installation.
2. User name : support@deskgate.com
Password : [Admin](#)
1. The internal ip address of the server should be written in the blank space below. [Localhost](#) can also be written in the logins made through the server computer.

DeskGate IT Management

DeskGate®
Remote Desktop & Data Security Solutions

E-mail adresi Şifre

support@deskgate.com

Şifreyi kaydet Giriş Yap

Web sitemizi ziyaret edin

Valid e-mail address

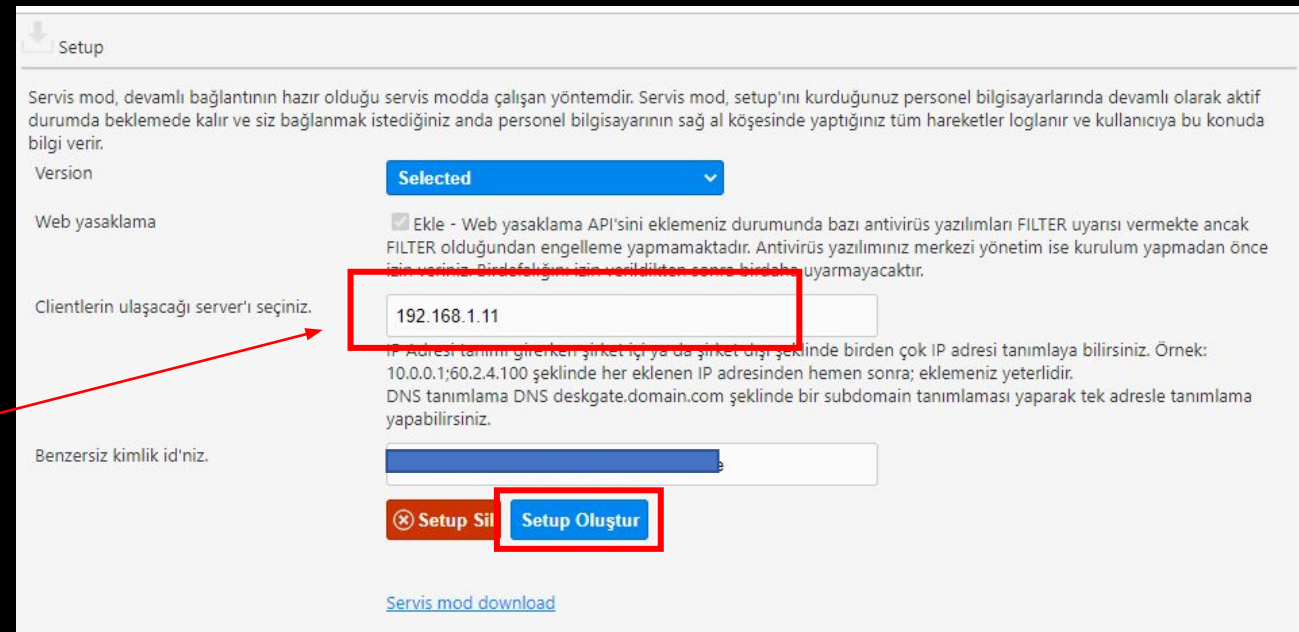
4. Making Local Settings

- We can access the local interface from the Report tab on the Management. We can also access the local page via the browser as internal ip/deskgate. Local password is the same as Management.
- User name : support@deskgate.com
Password : Admin
- The language option will automatically appear in English. It can be changed from Settings in the left menu.
- In order to receive reports from the Group list in the left menu of the interface that opens, the features must be turned on. We must make sure that features such as Web, App, Activity, Exlist, Copy are turned on.



5. Client Setup

1. <https://purchase.deskgate.com/> You must log in to the address with the username and password sent by the license e-mail.
2. On the page that opens, the Setup tab should be entered.
3. The installed version should be selected and the server internal ip address should be written in the server field where the Clients below will reach. If we want it to work with the server and users connected to different networks, we must write both internal and external ip and separate these two ip addresses with semicolons. E.g; 192.168.1.1;158.145,585.26



Setup

Servis mod, devamlı bağlantının hazır olduğu servis modda çalışan yöntemdir. Servis mod, setup'ını kurduğunuz personel bilgisayarlarında devamlı olarak aktif durumda beklemede kalır ve siz bağlanmak istediğiniz anda personel bilgisayarının sağ al köşesinde yaptığınız tüm hareketler loglanır ve kullanıcıya bu konuda bilgi verir.

Version Selected

Web yasaklama ☒ Ekle - Web yasaklama API'sini eklemeniz durumunda bazı antivirüs yazılımları FILTER uyarısı vermekte ancak FILTER olduğundan engelleme yapmamaktadır. Antivirüs yazılımınız merkezi yönetim ise kurulum yapmadan önce için verisini birden fazla için verildiğinden sonuç olarak uyarımayacaktır.

Clientlerin ulaşacağı server'ı seçiniz.

IP Adresi tanımlı girerken şirket içi ya da şirket dışı şeklinde birden çok IP adresi tanımlayabilirsiniz. Örnek: 10.0.0.1;60.2.4.100 şeklinde her eklenen IP adresinden hemen sonra; eklemeniz yeterlidir.
DNS tanımlama DNS deskgate.domain.com şeklinde bir subdomain tanımlaması yaparak tek adresle tanımlama yapabilirsiniz.


Benzersiz kimlik id'niz:

⊗ Setup Sil Setup Oluştur

[Servis mod download](#)

- When the external ip definition is made, the port setting must also be made. In order for external machines to be added to the system, one of the ports 80,443,444,6680,8080,8082 must be opened to the internal IP address of the server.
- Then click on create setup and wait until the setup has been created warning.
- After the created warning, the setup can be downloaded from the Business System Service mod download link and run without requiring any settings.
- The clients you have installed will be automatically added to the system. Machines can be controlled via Management.

Setup

 **Kurulum dosyanız oluşturuldu.**

Servis mod, devamlı bağlantının hazır olduğu servis modda çalışan yöntemdir. Servis mod, setup'ını kurduğunuz personel bilgisayarlarında devamlı olarak aktif durumda beklemede kalır ve siz bağlanmak istediğiniz anda personel bilgisayarının sağ al köşesinde yaptığınız tüm hareketler loglanır ve kullanıcıya bu konuda bilgi verir.

Version **v4.0.16**


Web yasaklama ☒ Ekle - Web yasaklama API'sini eklemeniz durumunda bazı antivirüs yazılımları FILTER uyarısı vermekte ancak FILTER olduğundan engelleme yapmamaktadır. Antivirüs yazılımınız merkezi yönetim ise kurulum yapmadan önce izin veriniz. Birdefalığını izin verildikten sonra birdaha uyarımayacaktır.

Clientlerin ulaşacağı server'ı seçiniz.

IP Adresi tanımı girerken şirket içi ya da şirket dışı şeklinde birden çok IP adresi tanımlayabilirsiniz. Örnek: 10.0.0.1;60.2.4.100 şeklinde her eklenen IP adresinden hemen sonra; eklemeniz yeterlidir.

DNS tanımlama DNS deskgate.domain.com şeklinde bir subdomain tanımlaması yaparak tek adresle tanımlama yapabilirsiniz.

For users you don't see in Management,
please contact us

0850 302 66 07 

Remote Desktop and Employee
Monitoring (deskgate.com)

